

603T

TECHNICAL SHEET



TECHNICAL DATA DATI TECNICI

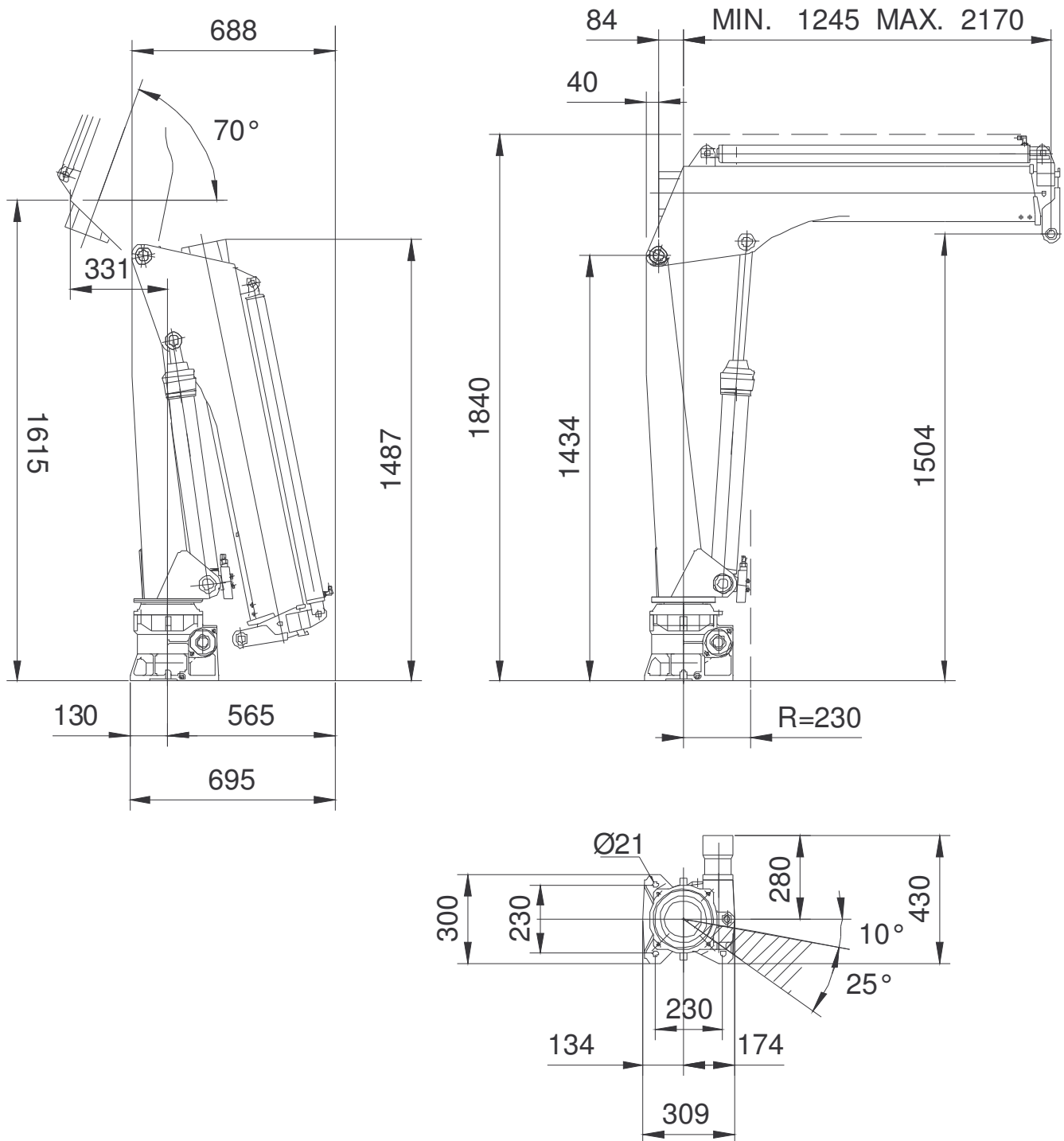
Max dynamic moment [daNm] Momento Massimo Dinamico	2405
---	------

	Version	Q_{max}
Max capacity [kg] Portata Massima [kg]	1S	1610
	2S	1505
	3S	1285

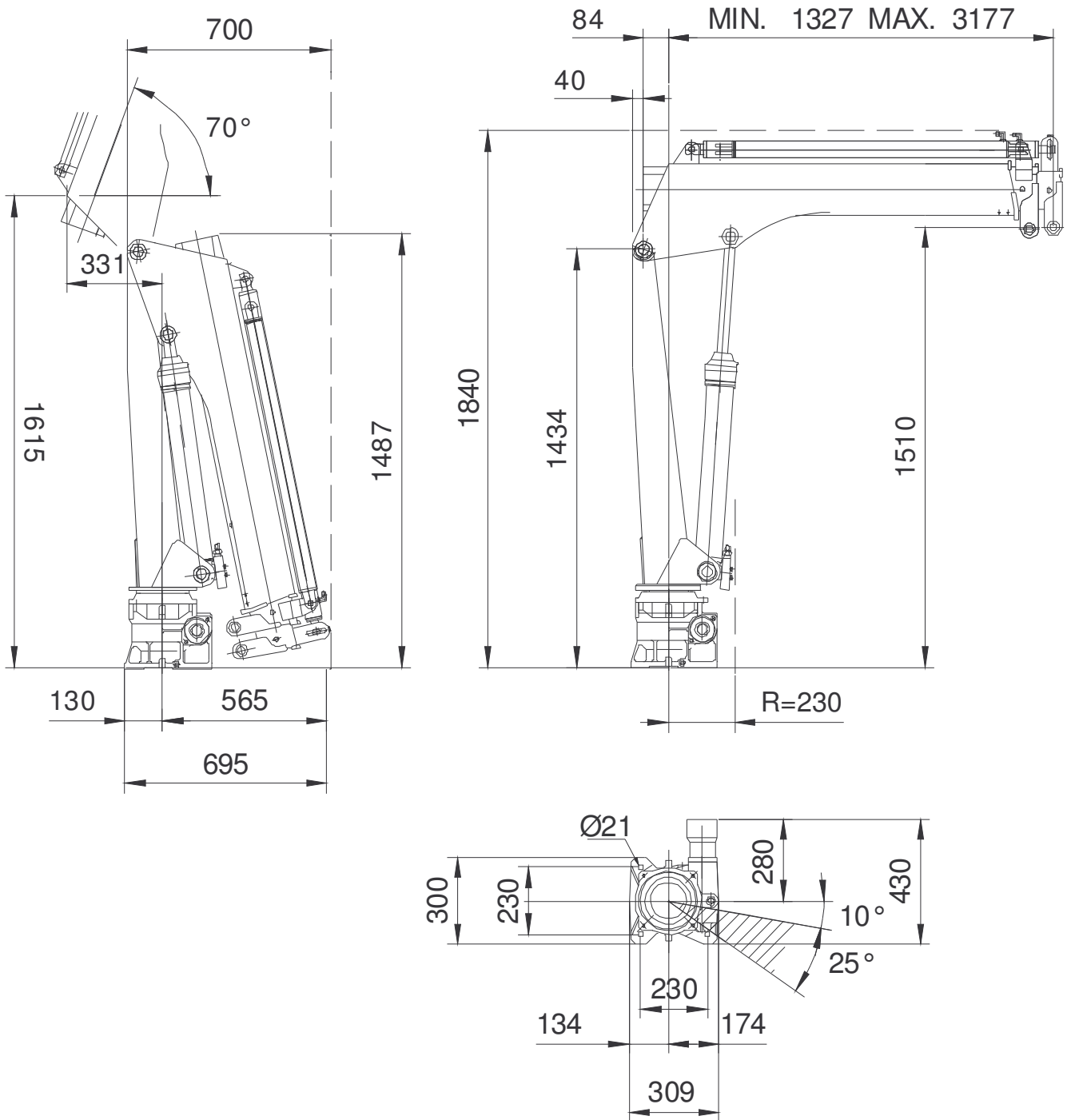
	Version	STD
Crane weight [kg] Peso della gru [kg]	1S	216
	2S	243
	3S	265

Max force on the standard stabilizer leg Massima reazione sul cilindro stabilizzatore	1779 daN
Max standard stabilizer pressure on the ground Massima pressione appoggio sul terreno	13.4 daN/cm ²
Max working pressure Massima pressione di lavoro	160 bar
Max oil flow to main relief valve Massima portata di olio al distributore	8 dm ³ /min
Oil tank capacity Capacità del serbatoio dell'Olio	17.5 dm ³
Slewing moment Coppia di Rotazione	350 daNm
Slewing angle Angolo di rotazione	355°
Absorbed power Potenza assorbita	2.1 kW 2.8 HP
Design standard Normative di progettazione	DIN 15018 EN 12999

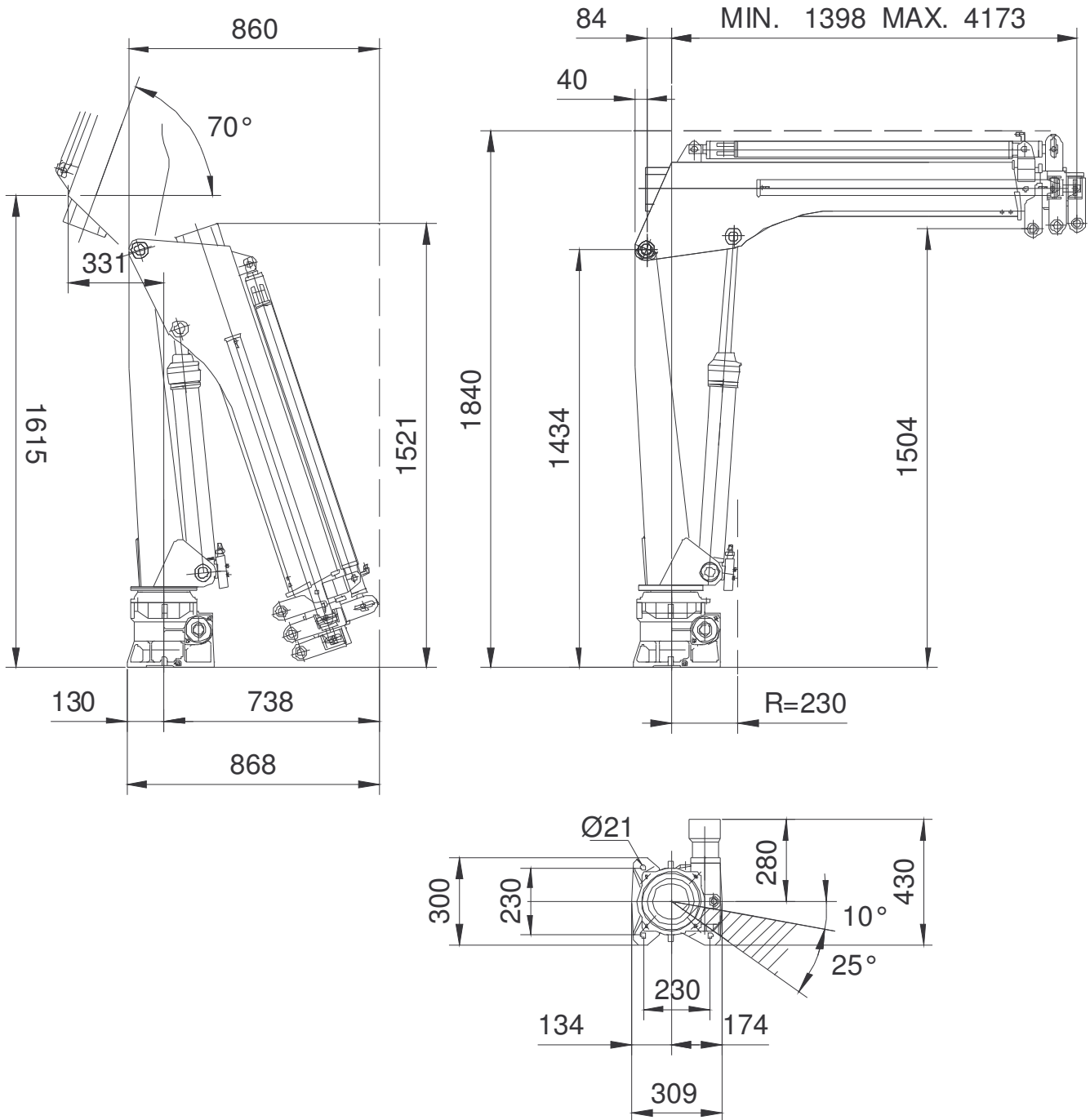
OVERALL DIMENSIONS – DIMENSIONI GENERALI 1S



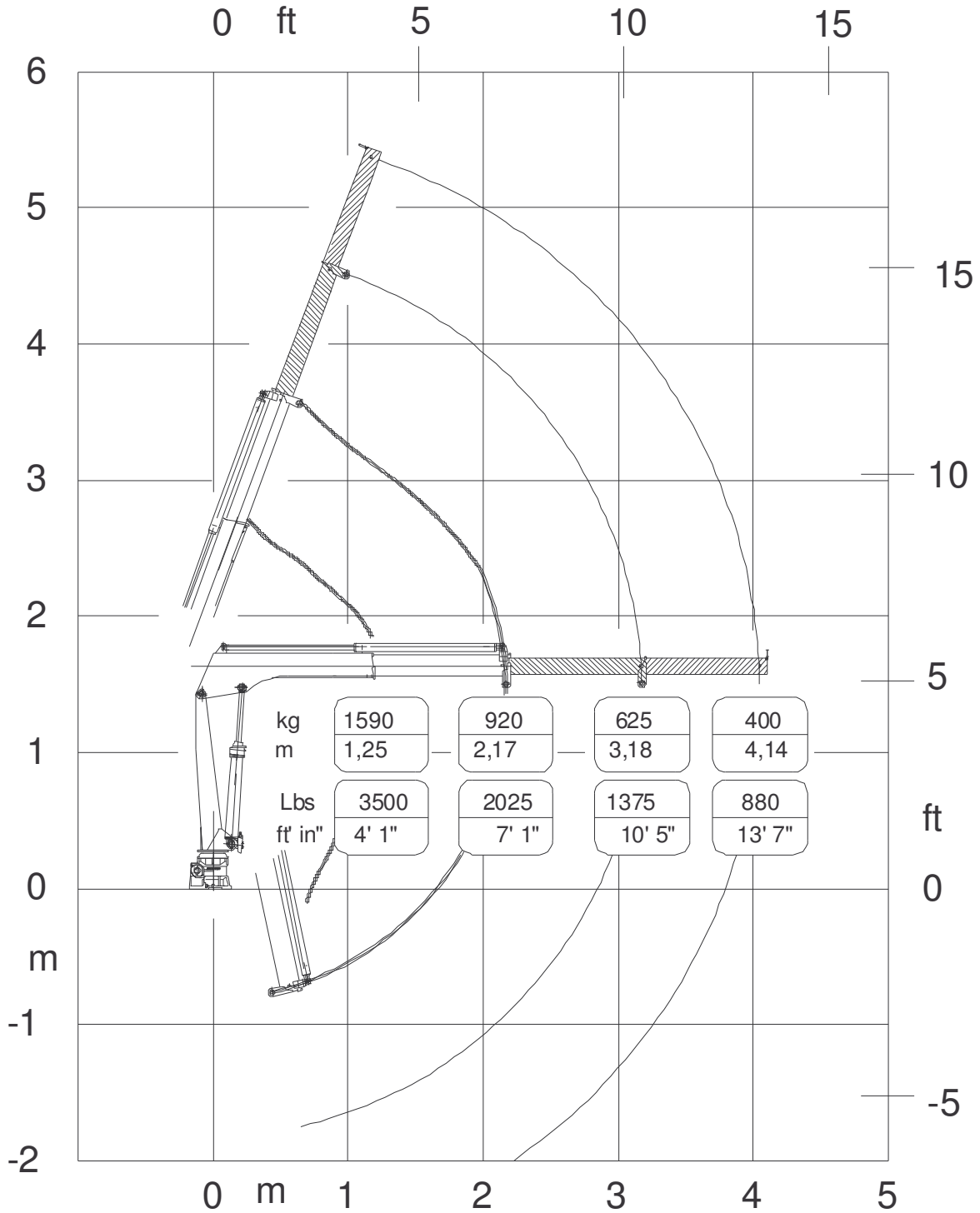
OVERALL DIMENSIONS-DIMENSIONI GENERALI 2S



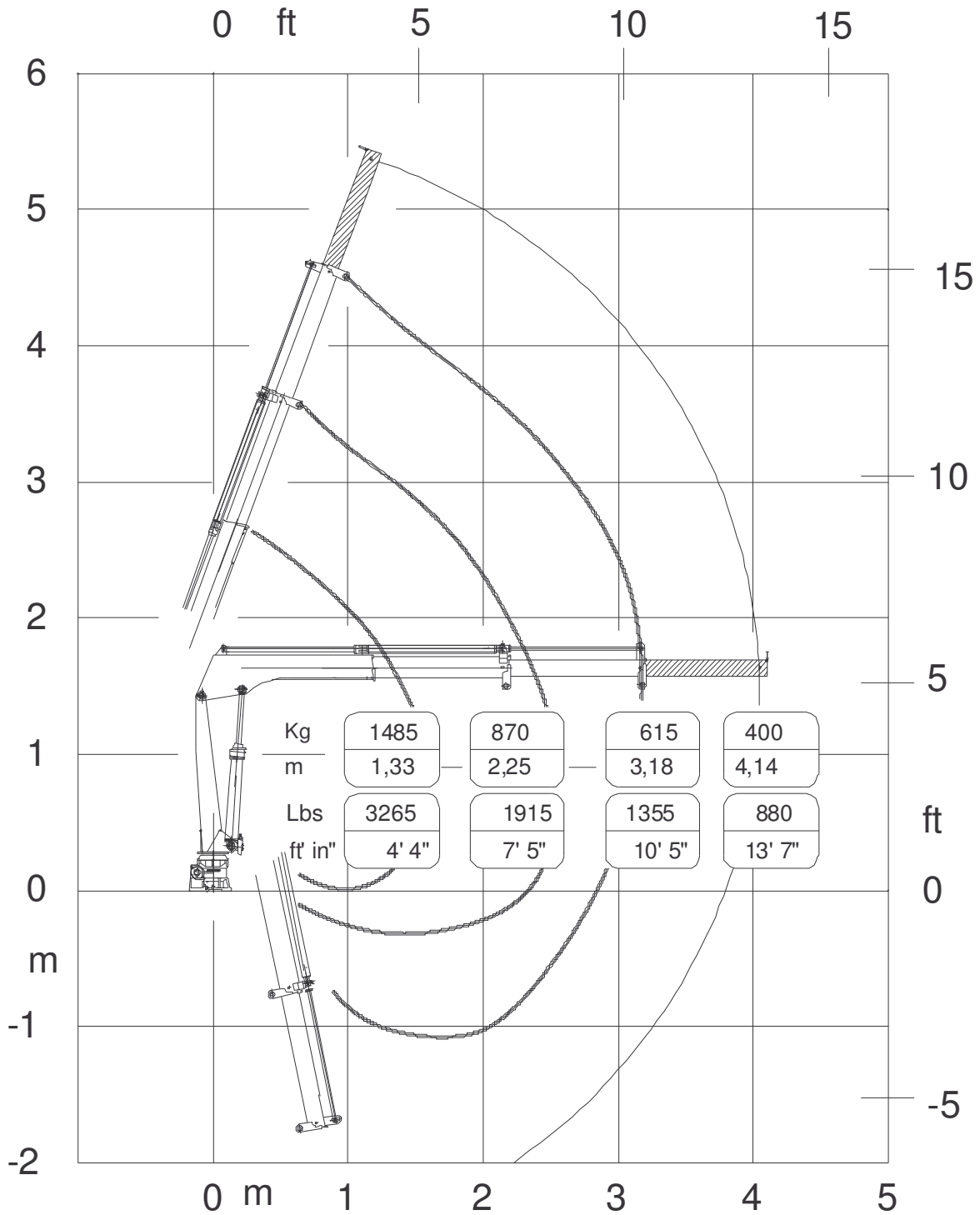
OVERALL DIMENSIONS-DIMENSIONI GENERALI 3S



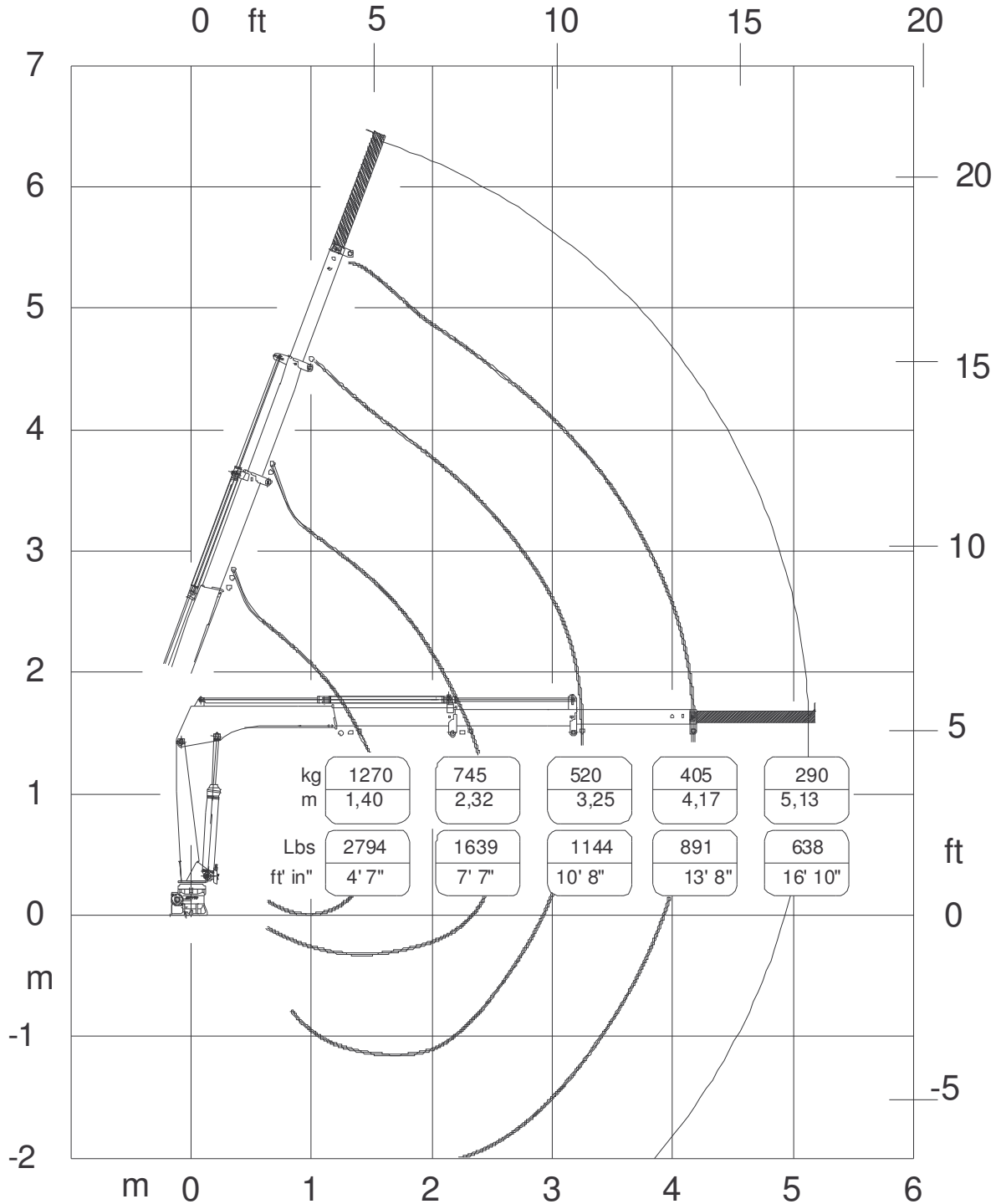
LOAD DIAGRAM-DIAGRAMMI PORTATE 1S



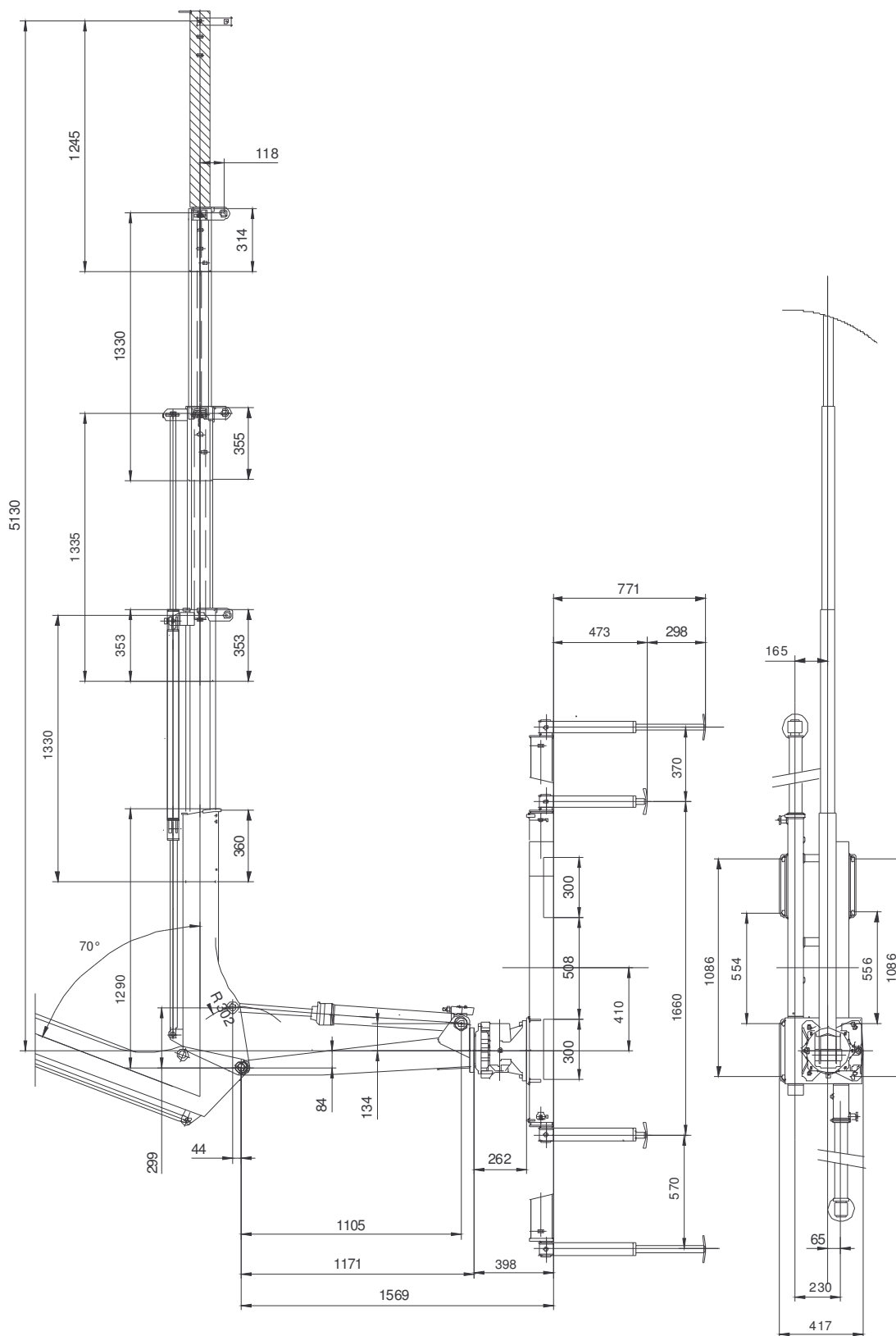
LOAD DIAGRAM-DIAGRAMMI PORTATE 2S



LOAD DIAGRAM-DIAGRAMMI PORTATE 3S



BASE – COLUMN – BOOM DIMENSIONS DIMENSIONI BRACCI-BASE E COLONNA



CYLINDERS AND PINS DIMENSIONS

LIFTING CYLINDER

<i>Cylinder bore</i>	80
<i>Cyl. ext. diameter</i>	90
<i>Rod diameter</i>	40
<i>Centers (open)</i>	1410
<i>Centers (closed)</i>	830
<i>Stroke</i>	580
<i>Artic. pin Ø</i>	40
<i>Pin material</i>	C40 NORM

1ST EXTENSION CYLINDER

<i>Cylinder bore</i>	50
<i>Cyl. ext. diameter</i>	60
<i>Rod diameter</i>	35
<i>Centers (open)</i>	2060
<i>Centers (closed)</i>	1135
<i>Stroke</i>	925
<i>Artic. pin Ø</i>	20
<i>Pin material</i>	C40 NORM

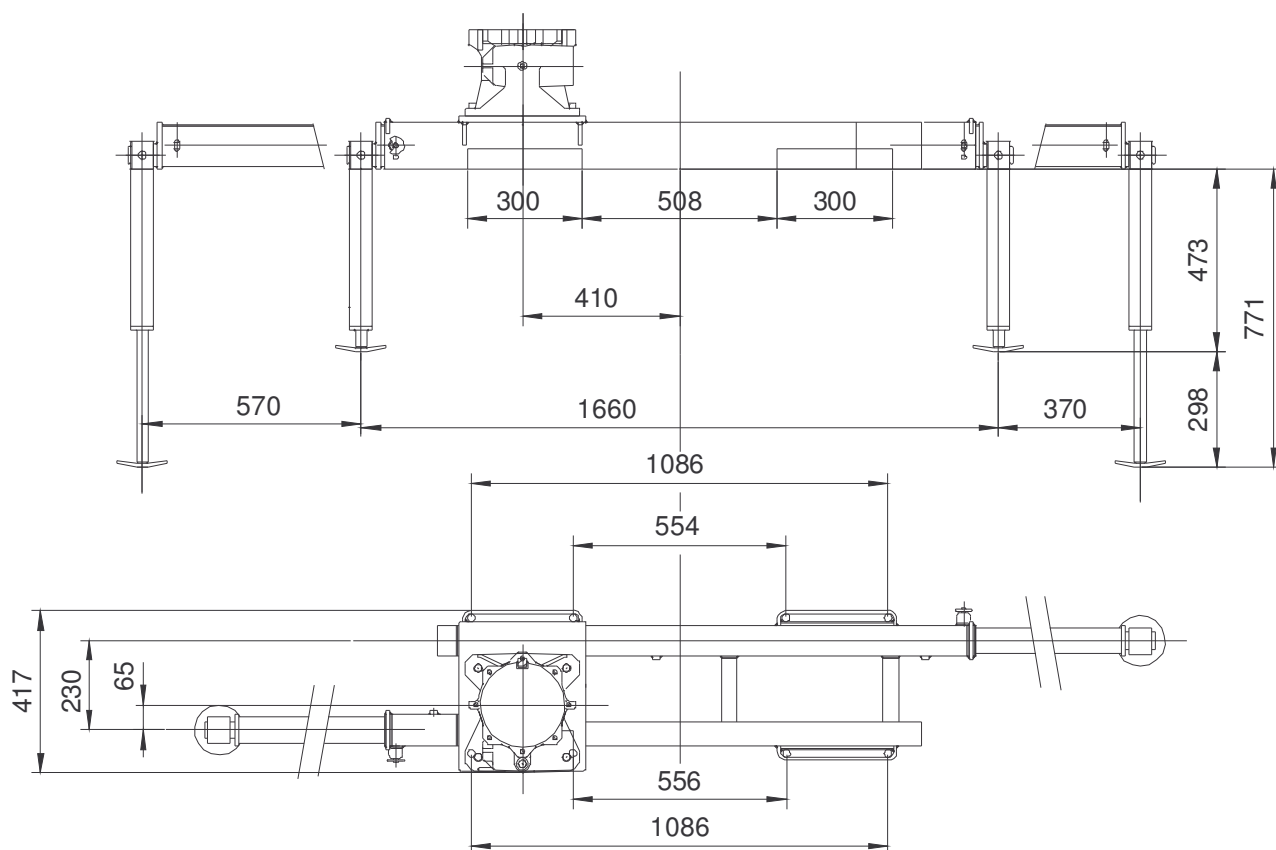
2ND EXTENSION CYLINDER

<i>Cylinder bore</i>	45
<i>Cyl. ext. diameter</i>	55
<i>Rod diameter</i>	25
<i>Centers (open)</i>	2065
<i>Centers (closed)</i>	1135
<i>Stroke</i>	925
<i>Artic. pin Ø</i>	15
<i>Pin material</i>	39NiCrMo3 QT

3RD EXTENSION CYLINDER

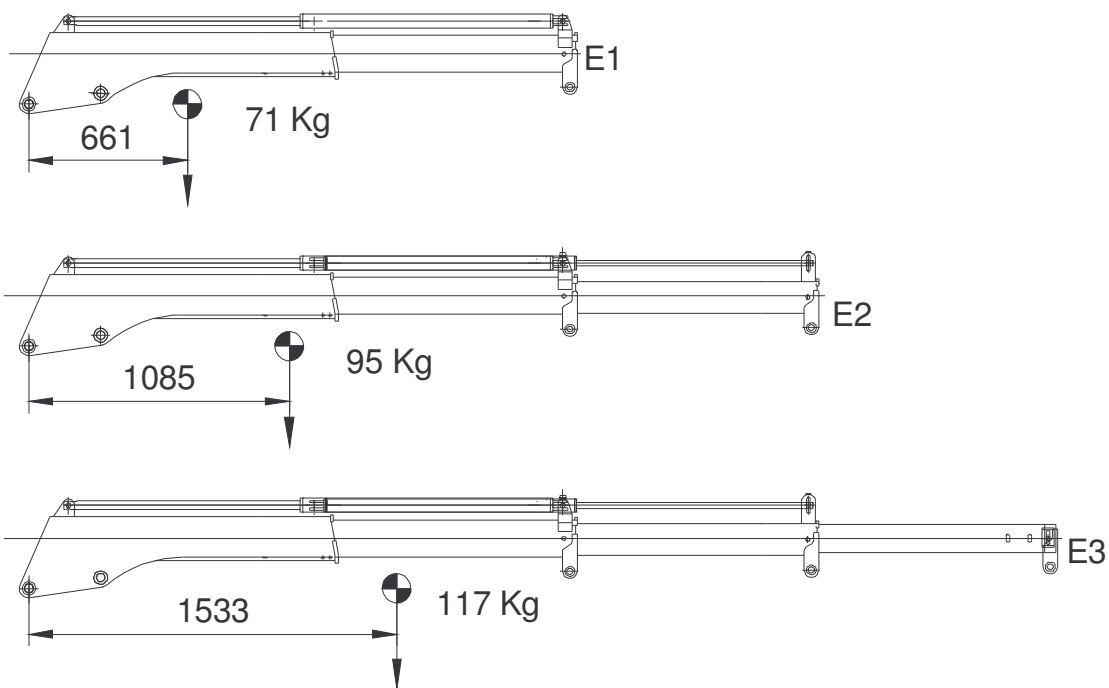
<i>Cylinder bore</i>	45
<i>Cyl. ext. diameter</i>	55
<i>Rod diameter</i>	25
<i>Centers (open)</i>	996.5
<i>Centers (closed)</i>	71.5
<i>Stroke</i>	925
<i>Artic. pin Ø</i>	15
<i>Pin material</i>	39NiCrMo3 QT

BASE DIMENSIONS- TIE MOUNTING RODS DIMENSIONI BASAMENTO -TIRANTI STAFFAGGIO



Fixing bolts Viti Fissaggio	N°4 M20x1.5 cl. 10.9 L=70 UNI 5931	Tightening torque Coppia Serraggio	240 Nm
Tie mounting rods Tiranti di Staffaggio	N°8 M18x1.5 cl. 10.9 L=650 39NiCrMo3 QT	Tightening torque Coppia Serraggio	150 Nm

WEIGHTS – CENTERS OF GRAVITY PESI – CENTRI DI GRAVITA'



	NO STAB.	BPS	BST
Fixed parts weight [kg] Peso delle parti fisse	145	205	253

603T

AMCO  **VEBA**

HYDRAULIC WINCH DATA

GRU CRANE 1S – 2S – 3S

Max winch direct pull [kg] Massimo tiro diretto dell'argano [kg]	600
---	-----